

Central CA Well Abandonment

prep, break concrete, excavate, cut, cap, & restore



Safety. People. Technology.



BEYOND YOUR EXPECTATIONS.

Oil and gas production has long presented unique challenges such as: managing idle wells and meeting statutory and regulatory requirements. HydroChemPSC recognized the vital importance of reducing the cost and risk that these requirements and their subsequent activity increases have caused. Significant cost and risk reductions have resulted from eliminating large regulated excavations, reducing crew size, and reducing well head cut times.

HydroChemPSC's Automation and Technology Group utilized their resources, knowledge and experience to create the tooling, equipment and factory modeling processes thus producing the Automated Cutting Equipment (ACE).

"ACE is the most efficient, all-in-one, full service, automated cutting equipment in California."

ABANDONMENT AFFIRMATIONS:

- Respected longstanding and safe well abandonment
- All-in-One Waterjet cutting & lifting
- CalGEM experience and communication
- E&P and Non-E&P waste management and disposal
- State/DOSH certified lead and asbestos contractor

FACTORY MODELING.

HydroChemPSC's factory model approach to well abandonment allows field performance data to be accurately collected and analyzed to implement standardized and ongoing process improvements. These improvements include, reduced setup times, minimal excavations, shorter cut times, less backfilling, and overall lower costs.

CONVENTIONAL EXCAVATIONS

- OSHA permit required
- Ground disturbance / line strike
- Excessive dig times
- Trench box at tight locations
- Excessive backfill times

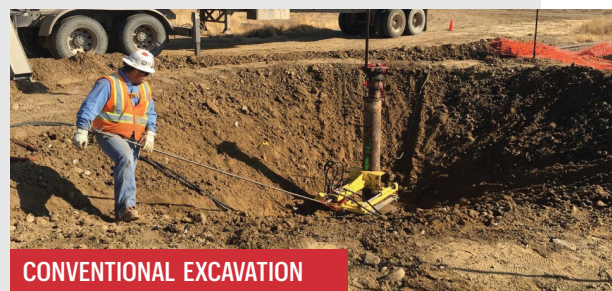
OPTIMIZED NON-ENTRY EXCAVATIONS

- Smaller footprint
- Less ground disturbance
- Less risk for underground hazards
- Eliminate any use of trench box
- Eliminate entering excavation
- Eliminate permitting / OSHA notifications
- Reduced backfill

- ✓ **REDUCED FOOTPRINT**
- ✓ **EXPOSURE REDUCTION**



OPTIMIZED NON-ENTRY EXCAVATION



CONVENTIONAL EXCAVATION

For more information please e-mail websales@hydrochempsc.com

SYNERGISTIC SOLUTIONS:

- Automated Tank & Vessel Cleaning
- Specialty Mechanical Services
- Facility Decommissioning
- Pumping Unit Maintenance Services
- Internal & External Fin Fan Cleaning
- Multiple HF Tube Bundle Cleaning
- In Service Pipe/Line Repair (1" – 48")
- Smart Isolation Plugs and Caps
- COVID-19 Decontamination
- Specialized Transportation
- Turnaround Services
- Vapor Control Management
- Chemical Cleaning
- Solids Separation
- Coke/Refractory Removal
- Leak Detection & Repair
- Engineered Repairs
- Offshore Services
- Vessel & Dockside Cleaning
- Mercury & NORM Decontamination



RESPECTED LONGSTANDING SAFE WELL ABANDONMENT.

HydroChemPSC has well over a decade and hundreds of thousands of man-hours performing well abandonments incident free in California for some of the most demanding clients in the industry. We continue to invest in equipment, talented personnel, and innovative tools and technology to support our services. This, in addition to our forward-thinking philosophy on risk reduction and cost management, has demonstrated unparalleled success in maintaining safety and true environmental compliance for the lowest total cost to our customers.

- New innovative tooling & equipment
- Longstanding dedicated personnel
- Risk reduction & cost control initiatives

Our Well Abandonment team consists of experienced professionals that are task driven but still understand the complexities of these multi-faceted projects for the various California field locations. Well site preparation, well excavation, site restoration, project management; HydroChemPSC will provide in-house competent personnel that will execute well abandonment tasks both proficiently and safely with stringent adherence to pricing schedules and completion schedules.

ALL-IN-ONE WATERJET CUTTING & LIFTING.

Our Automated Cutting Equipment (ACE) has elevated automated cutting systems to a new level.

ACE OPTIMIZATIONS:

- 2-Man crew
- Minimal setup time
- Faster cut times
- Remote hands-free cutting & lifting

HydroChemPSC supplies a 2-man mobile crew for Waterjet cutting of well heads, tank doors, vessel windows and nozzles, pipes, and much more. A professional crew with specialized equipment is available for immediate dispatch to all California locations.

